



Thinking about university?

A guide for Aotearoa New Zealand students and whānau



2025



Nau mai piki mai tāuti mai



Welcome to *Thinking about university? A guide for NZ students*.

This guide is to support you and your whānau when thinking about studying at one of Aotearoa New Zealand's eight universities.

It's a starting point to help you plan how to successfully move into university life.

Read the latest information on our website:

www.thinkingaboutuni.nz



Visit each university website for more detailed information.



What to study and where? is a booklet where you can see all the major subjects on offer at each university. A pdf version is available on our website.

Follow us on Instagram:

 [thinking_about_uni](https://www.instagram.com/thinking_about_uni)

Information for international students is at:
www.universitiesnz.ac.nz/international-students

These resources have been collated by Universities New Zealand—Te Pōkai Tara.

For more information, contact us at: studentguide@universitiesnz.ac.nz

Disclaimer – Although we've made every effort to ensure accuracy, we recommend you check university websites for the latest information.

Universities New Zealand—Te Pōkai Tara is the representative body for New Zealand's eight universities.



	Page
Thinking About Uni?	
Welcome	2
New Zealand Universities at a glance	4
Choosing a university	5
New Zealand Universities	
What to study and where?	6
Introducing New Zealand's universities	7
Semester Dates	
Semester dates 2025	24
Get Ready & Get Sorted	
Get ready checklist	27
Get in: Admission to university	30
Get sorted: StudyLink, scholarships, accommodation	35
Get more experience	40
Student Life	
Student life: a typical day	42



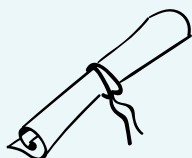
New Zealand Universities at a glance

Think of a university education as an investment that gives you options and opportunities for your future.



Me aro ENGAGE

University is an opportunity for you to engage with leading teachers and researchers from a top 5% world-ranked university.



Me tipu DEVELOP

Specialist knowledge. Critical thinking, research & analytical skills. Communication, interpersonal & information technology skills.



Me whakapakari ENHANCE

Cultural understanding, global awareness and community involvement.



Me hono CONNECT

Through internships and work placements with employers and industry.



Me rongo me EXPERIENCE & EXPLORE

Study abroad and international student exchange programmes.



Me whakahura DISCOVER

Student life—student groups, clubs and activities.

New Zealand's eight universities offer a wide range of study opportunities and all are ranked within the world's top 5%.

Studying at a university develops your professional skills along with important life skills such as analysis, critical thinking, communication and innovation.

You will use these through your whole career, not just your first job.

A university is a community, offering a range of support services and facilities on campus to enable you to achieve at your best, and to keep you motivated on your study journey.

Even if you are considering studying by distance, you still have access to a range of support services. Check out the map below!



Ko tēhea te whare wānanga mōu? Choosing a university

A little planning will help you make the most of the opportunities at university.

All eight New Zealand universities are ranked in the top 5% in the world and offer quality tertiary education and student support—so they're all good options!

Some things you may want to consider:

- What do I love doing? What are my future goals?
- Which universities offer what I want to study?
- Where is the campus located? Is it in a city, out of town, or close to home?
- What is the vibe of the university?
- Does the university have all the facilities I'd want?
- Is there university accommodation - Halls of Residence?
- What student support services are available?





Ka ako i te aha, ka ako ki hea?

What to study and where?

Universities offer a wide range of subjects to study at undergraduate level. The main undergraduate qualification is called a bachelor's degree and the subject you choose to specialise in is called your major.

We've put together a list of degrees and majors offered at each of New Zealand's eight universities to help you decide what to do and where to go.

Check out our booklet:



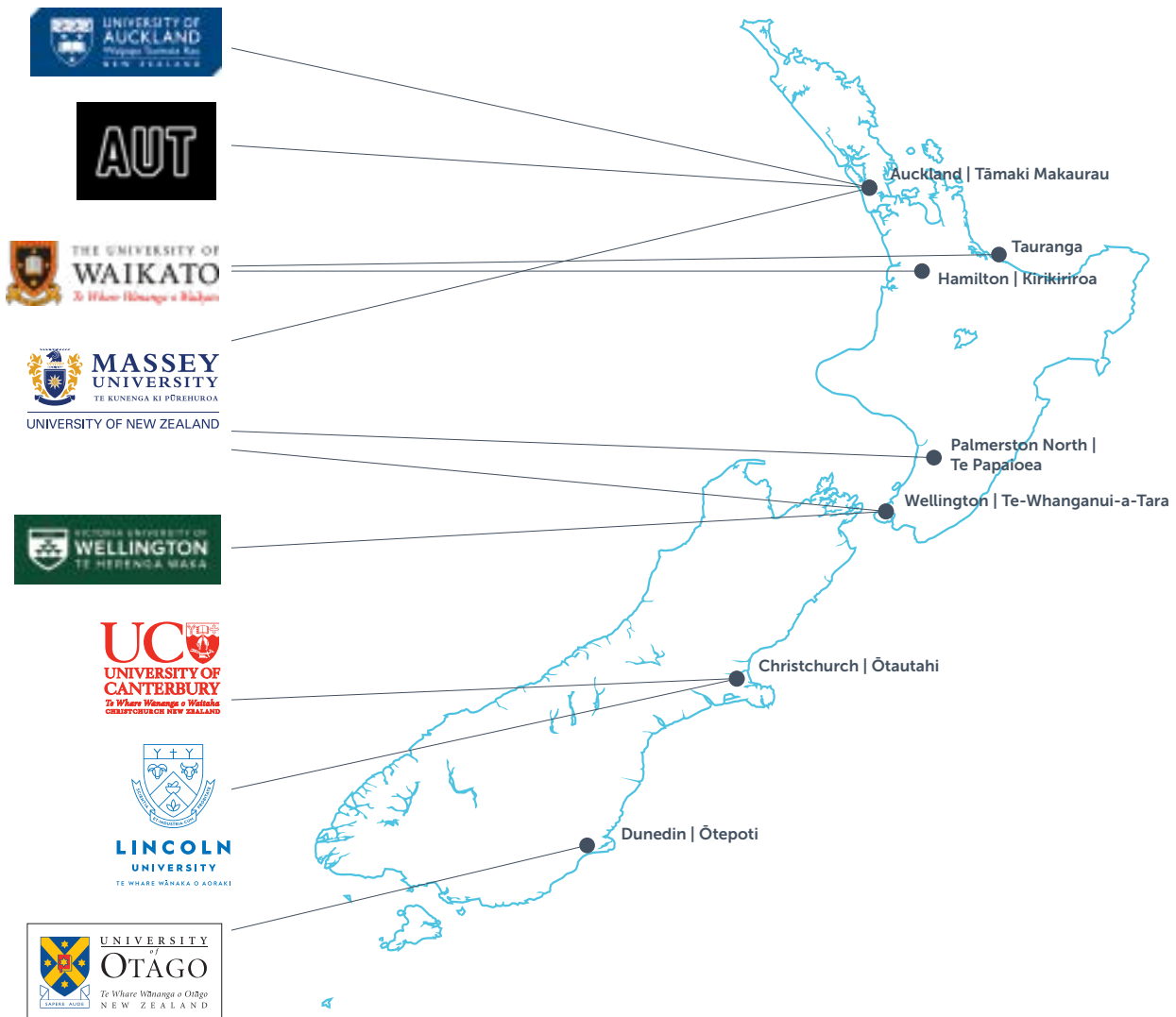
Read it on our website

thinkingaboutuni.nz



Nei ngā whare wānanga o te motu

Introducing New Zealand universities





Waipapa Taumata Rau University of Auckland

New Zealand's leading university

Main campus: Auckland City

Other campuses: Newmarket, Grafton, Tai Tonga (Manukau) and Tai Tokerau (Whāngarei)

The University of Auckland is ranked as New Zealand's leading university, with degrees that are world-class and internationally recognised. Auckland's research-led programmes attract a high calibre of teaching professionals. You will learn from people who are passionate about their chosen fields.

Faculties

Arts

Business School

Creative Arts and Industries

Education and Social Work

Engineering

Law

Medical and Health Sciences

Science

Large-scale research institutes

Auckland Bioengineering Institute

Liggins Institute

0800 61 62 63 | auckland.ac.nz



UniofAkl



University of Auckland



universityofauckland



AucklandUni



universityofauckland



UNiofAUCKLAND

Student population

Total (EFTS)	35,295
--------------	---------------

Total (Students)	45,755
------------------	---------------

Pre-degree	1,555
------------	--------------

Undergraduate	26,705
---------------	---------------

Postgraduate	18,475
--------------	---------------

Domestic	36,565
----------	---------------

International	9,425
---------------	--------------

Māori	3,090
-------	--------------

Pacific	4,260
---------	--------------

Part-time*	12,225
------------	---------------

Full-time*	24,345
------------	---------------

* Domestic students only

2023 data. Source: Ministry of Education. Custom data for Universities New Zealand (extracted 29 April 2024). Numbers have been rounded for confidentiality reasons.

Ākonga Māori

Tū ake i te kei o te waka mātauranga. Tū ake nei i Waipapa Taumata Rau. Nau mai, haere mai.

Waipapa Marae (City campus), Tai Tonga campus in Manukau and Te Papa Ako o Tai Tokerau in Whangārei provide a home away from home for taura Māori and their whānau.

The university's Kaitakawaenga Māori provides information and support to taura and their whānau, including advice on entry, enrolment, scholarships and financial opportunities, as well as pastoral guidance.

Tuākana is the university-wide learning community for enhancing the success of taura Māori, offering study wānanga, whakawhanaungatanga and workshops.

Ngā Tauira Māori is the Māori student association at the University of Auckland. It is responsible for advocating better conditions for taura Māori on campus.

WEBSITE KEY WORD SEARCH: Māori, Tuākana
www.auckland.ac.nz/en/education/study-with-us/maori-at-the-faculty/maori-student-support-services.html



Pacific students

Tālofa lava, Mālō e lelei, Kia orana, Bula vinaka, Fakatalofa atu, Fakaalofa lahi atu, Halo olaketa, Ia orana, Mauri, Aloha, Mālō ni, Hafa adai.

Our Fale Pasifika is the centre of the university Pacific community, and our Tai Tonga campus in Manukau allows our Pacific students to attend New Zealand's leading university in the heart of the South Auckland community.

The university's Pacific Equity Adviser provides a range of student support services, including guidance with entry, enrolment and scholarship opportunities.

Tuākana is the university-wide learning community for enhancing the success of Pacific students, offering fonotaga and workshops.

WEBSITE KEY WORD SEARCH: Pacific, Tuākana
www.auckland.ac.nz/en/education/study-with-us/pacific-at-the-faculty/pacific-student-support-services.html





Te Wānanga Aronui o Tāmaki Makau Rau

Auckland University of Technology (AUT)

One of the world's best modern universities

Main campus: Auckland City

Other campuses: North Shore and Manukau

AUT's focus is on our students finding their greatness and preparing for a bright future and meaningful contribution to their communities, Aotearoa and the world.

As New Zealand's most diverse and vibrant university, we are the country's only university of technology, and ranked in the top 50 universities under 50 years of age. Our world-leading academics' research informs our teaching, benefits communities and shapes the future.

Strong relationships with industry and employers are one of our strengths – 90% of AUT bachelor graduates complete a work placement or internship as part of their studies, and our students graduate with valuable experiences and industry connections for their career.

Faculties

Business, Economics and Law

Culture and Society

Design and Creative Technologies

Health and Environmental Sciences

Māori and Indigenous Development

0800 288 288 | aut.ac.nz



autuni



AUT



AUTUniversity



autuni



autuni



autuni

Student population

Total (EFTS) **18,565**

Total (Students) **25,270**

Pre-degree **1,285**

Undergraduate **18,200**

Postgraduate **6,100**

Domestic **21,030**

International **4,240**

Māori **2,420**

Pacific **4,035**

Part-time* **6,780**

Full-time* **14,250**

* Domestic students only

2023 data. Source: Ministry of Education. Custom data for Universities New Zealand (extracted 29 April 2024). Numbers have been rounded for confidentiality reasons.

Ākonga Māori

E hunga pikoko ki te mātauranga, nau mai piki mai ki te Wānanga Aronui O Tāmaki Makau Rau.

Our marae Ngā Wai O Horotiu is located at Waihorotiu (City) Campus and serves as a whānau, cultural, and spiritual centre for the university.

We have programmes and activities across the university dedicated to ākonga Māori achievement and success.

Our Pou Māori | Māori Centre is an Iwi-Māori focussed service who partner with ākonga Māori to provide support with ako/learning, kupu āwhina/advice, pūtea/finances, wāhi/spaces and kaupapa Māori events and activities. They are here to tautoko – from before ākonga arrive at AUT through to graduation and beyond.

Titahi ki Tua (TKT) is the ākonga Māori rōpū at AUT. They offer ākonga a network where they can come together to share ideas and identity, socialise, and meet other ākonga Māori, all within a supportive marae-based environment.

Nāu te rourou, nāku te rourou, ka ora te iwi.

WEBSITE KEY WORD SEARCH: Māori, Māori student support



Pacific students

Warm Pacific greetings!

AUT offers comprehensive support for our diverse Pacific communities.

Our Student Hub is always a good place to start if you are looking for support and advice with your studies, health, welfare and anything else on life as a student.

Our Office of Pacific Advancement oversees a range of Pacific-focused student engagement activities. Through our Oceanian Leadership Network, you can access initiatives that focus on leadership development and academic, cultural and social support.

WEBSITE KEY WORD SEARCH: Pacific, Pacific Support

www.aut.ac.nz/pacific





Te Whare Wānanga o Waikato

The University of Waikato

Ko Te Tangata, For the People

Main campus: Hamilton

Other campus: Tauranga

University of Waikato graduates are known for making a big difference in the world around them and we look forward to helping you do the same. Our students have a desire to make their mark and pursue a career with purpose.

Our flexible degree structures mean you can study a broad range of subjects to shape a qualification that matches your strengths and career interests. You'll gain hands-on experience through our work-integrated learning programme, giving you a competitive edge with potential future employers and helping you stand out from the crowd as you start your career.

Hamilton campus

Our Hamilton campus sits on 65 hectares of stunning grounds complete with cafés, lakes, vibrant Boon Street artworks and accommodation.

Tauranga campus

Our Tauranga campus, which opened in 2019, has enhanced the range of qualifications available to students in one of New Zealand's most sought-after locations. The CBD campus offers a modern learning environment where students, researchers, the community and industry can work together.

Divisions

Arts, Law, Psychology and Social Sciences

Education

Health, Engineering, Computing and Science

Management

Māori and Indigenous Studies

0800 924 528 | waikato.ac.nz



Student population

Total (EFTS)	10,485
Total (Students)	14,065
Pre-degree	980
Undergraduate	9,635
Postgraduate	3,885
Domestic	10,895
International	3,165
Māori	2,745
Pacific	1,025
Part-time*	3,670
Full-time*	7,230

* Domestic students only

2023 data. Source: Ministry of Education. Custom data for Universities New Zealand (extracted 29 April 2024). Numbers have been rounded for confidentiality reasons.

Ākonga Māori

Māori students make up nearly a quarter of our student population, so are visible and actively engaged in all aspects of university life. We have lots of initiatives to support our taura Māori, including Te Kāhui Pīrere transition-to-university programme, Te Āhurutanga leadership programme, Māori mentors, scholarships and awards, and even a free bus from our surrounding regions.

Both Waikato campuses offer the only full immersion te reo Māori diploma at a university, Te Tohu Paetahi, which has helped revitalise te reo Māori for 30 years. Our Māori academic staff are internationally recognised leaders in Indigenous knowledge, so you'll be learning from the best.

Our Rōpū Māori are active across campus, leading events that bring new and returning students together, connecting you into the whānau. From the moment you arrive on campus and attend the pōwhiri, through to your official graduation on our university marae, Te Kohinga Mārama, this is a place where you can feel at home.

Nau mai, haere mai ki Te Whare Wānanga o Waikato.

WEBSITE KEY WORD SEARCH: Māori, Māori Student Support

www.waikato.ac.nz/maori



Pacific students

Kia orāna, mālō e lelei, tālofa lava, fakaalofa lahi atu, ni sa bula vinaka, tālofa nī, halo olaketa, ko na mauri, tālofa, aloha and warm Pacific greetings.

We have a great team of dedicated Pacific support staff and resources to help you achieve your career aspirations. This includes our Imua initiative, which supports Pacific students in the transition to university, and our Pacific Excellence Scholarship.

We have many Pacific student associations you can join, and the 'Conch' on the Hamilton campus is a space for you to enjoy fono, seminars, workshops, social gatherings and community events.

WEBSITE KEY WORD SEARCH: Pacific, Pacific Support
www.waikato.ac.nz/students/pacific-support





Te Kunenga ki Pūrehuroa

Massey University

New Zealand's defining university

Main campus: Manuwatū (Palmerston North)

Other campuses: Ōteihā (Auckland), Pukeahu (Wellington) and Distance

Massey is world leading in many academic disciplines and fields of research and consistently ranked in the top 3% of universities internationally (QS World University Rankings).

We offer flexible ways to study: face to face, distance learning or a hybrid of both. With our award-winning teachers, well-connected lecturers, world-renowned researchers, committed support staff and work-integrated learning, we provide the ideal learning environment to help you succeed in your studies.

Massey is committed to being a Te Tiriti o Waitangi-led university, demonstrating authentic leadership in contemporary Aotearoa New Zealand as we uphold the founding document of our nation and its principles through our practice.

Colleges

Creative Arts

Health

Humanities and Social Sciences

Sciences

Massey Business School

0800 627 739 | massey.ac.nz



Student population

Total (EFTS) **16,250**

Total (Students) **26,505**

Pre-degree **1,820**

Undergraduate **15,695**

Postgraduate **9,390**

Domestic **22,150**

International **4,355**

Māori **3,260**

Pacific **1,490**

Part-time* **12,500**

Full-time* **9,650**

* Domestic students only

2023 data. Source: Ministry of Education. Custom data for Universities New Zealand (extracted 29 April 2024). Numbers have been rounded for confidentiality reasons.

Ākonga Māori

Piki mai, kake mai, nau mai, haere mai ki Te Kunenga Ki Pūrehuroa.

Massey University's Tiriti-led strategy has revived a focus on providing cultural, pastoral and academic support to support Ākonga Māori. This includes Te Rau Tauawhi, the Māori Student Centre, with a team dedicated to helping tauira navigate university life and succeed.

Te Pūtahi-a-Toi, the School of Māori Knowledge, is the cultural heart of the Manawatū campus, while the Pukeahu Marae development project will provide an exciting cultural and learning space at the Wellington campus.

Tauira Māori are well supported on each campus and Māori student advisers are available to help with enrolment and career advice.

Te Rau Puawai Workforce Programme provides bursaries and incredibly successful learning support for students in the field of Māori mental health.

WEBSITE KEY WORD SEARCH: Māori, Māori student advisers

www.massey.ac.nz/māorimassey

Facebook: @MaoriMassey

Instagram: Maori@Massey



Pacific students

Kia orana, Ni sa bula Vinaka, Fakaalofa lahi atu, Tālofa lava, Mālō ni, Mālō e lelei, Fakatalofa atu, Kam na bane ni mauri.

At Massey University we are committed to providing Pacific students with a strong sense of community, offering a fale (dedicated hub) for students to gather and study and support each other at each campus.

We have strong support networks to empower you to succeed and offer a range of support including academic advice and tutoring, mentoring and a safe place to talanoa with Pacific students and staff.

Pacific recruitment advisors are also available to help you transition into tertiary study at Massey University by assisting you with the enrolment process and advice on scholarships and other funding.

WEBSITE KEY WORD SEARCH: Pacific Students

www.massey.ac.nz/pacific





Te Herenga Waka— Victoria University of Wellington

Main campus: Wellington

Te Herenga Waka—Victoria University of Wellington draws on its capital city location to carry out world-class research and teaching, and to make connections here and around the world.

In partnership with Wellington city and region, we provide a unique student experience. Our students feel a sense of belonging to a vibrant and inclusive university and civic community.

This is a place where learning flourishes and people are equipped to transform society. We grow the capability, skills and confidence of all our students and support them to pursue their passion and excel in their chosen area of study.

Faculties

Architecture and Design Innovation

Education

Engineering

Graduate Research

Health

Humanities and Social Sciences

Law

Science

Wellington School of Business and Government

0800 04 04 04 | wgtn.ac.nz



Student population

Total (EFTS)	15,875
Total (Students)	20,605
Pre-degree	330
Undergraduate	14,620
Postgraduate	5,900
Domestic	17,890
International	2,715
Māori	2,310
Pacific	1,385
Part-time*	5,975
Full-time*	11,915

* Domestic students only

2023 data. Source: Ministry of Education. Custom data for Universities New Zealand (extracted 29 April 2024). Numbers have been rounded for confidentiality reasons.

Ākonga Māori

Te Herenga Waka is both the Māori name of the university and our marae, and means the mooring place of canoes.

Located at the heart of our Kelburn campus, the marae is a welcoming space for students, staff and the wider community, and offers teaching and learning, research and engagement facilities. It is currently closed for construction of the Living Pā building, but the entire marae complex is due to reopen in late 2024, and will be one of the most sustainable educational facilities in the world.

The university has a wide range of services to support Māori students, beginning with when you are considering studying in Wellington.

The Kaitawaka—Māori Advisors in Te Kahupapa—Future Students team, can help you and your whānau with admission and enrolment information, course planning and queries about accommodation, grants and scholarships. An orientation programme specifically for new taura Māori will also help ease your transition into university study.

Āwhina, our Māori student support team, works across all campuses and provides culturally safe, positive and holistic care and advice for taura Māori that encourages their cultural confidence and academic success. The Māori Learning Adviser at Te Taiako—Student Learning also offers one-on-one sessions and workshops to help students develop writing, study and assignment skills. Ngāi Taura, the Māori students' association, represents the interests of all taura Māori at the university. It also runs a range of social and cultural events, as do other subject-based Māori student associations.

WEBSITE KEY WORD SEARCH: Māori, Āwhina, marae

www.wgtn.ac.nz/maori-hub

Pacific students

Tālofa lava, Kia orana, Mālō e lelei, Ni sa bula vinaka, Fakaalofa lahi atu, Fakatalofa atu, Kam na mauri, Gud de tru, Kaselehlē, Halo olgeta, la orana, Aloha mai e, Noa'ia, Kia ora, warm Pasifika greetings.

At Te Herenga Waka - Victoria University of Wellington we are committed to ensuring the success of all Pasifika students and Pasifika staff. Areas of focus on research, quality teaching, enhanced learning experiences and culturally appropriate support. We aim to lift Pasifika participation and academic achievement.

The Office of the Assistant Vice-Chancellor Pasifika is led by Associate Professor Hon Luamanuvao Dame Winnie Laban DNZM and works collaboratively with others to advocate for Pasifika students and staff, ensuring that their enrolment, retention and successful completion of studies.

Our Pasifika Student Success Team comprises of student engagement advisers from each faculty and provides support and advice for students. Examples of the support provided are referrals where appropriate, holistic support, specialised study sessions, exam preparation, cultural guidance and pastoral care.

We have a strong group of Pasifika staff across the university who support the Pasifika Student Council and Pasifika associations to ensure a strong Pasifika student voice and that together we continue to thrive as a Pasifika community at university.

www.wgtn.ac.nz/pasifika





Te Whare Wānanga o Waitaha

University of Canterbury

Engaged, Empowered, Making a Difference Tangata Tū, Tangata Ora

Main campus: Ōtautahi Christchurch

Te Whare Wānanga o Waitaha | University of Canterbury (UC) is a future-focused, globally recognised university with opportunities outside traditional learning that give our students the chance to find themselves and connect with others. When you graduate from UC, you join a whānau of alumni more than 155,000 strong who are effecting change across the globe.

Faculties

Toi Tangata | Arts

Ako | Education

Pūhanga | Engineering

Pūtaiao | Science

Umanga | Business

Ture | Law and Criminal Justice

Oranga | Health

Student population

Total (EFTS) **16,975**

Total (Students) **20,825**

Pre-degree **625**

Undergraduate **12,645**

Postgraduate **8,135**

Domestic **19,025**

International **2,280**

Māori **2,020**

Pacific **725**

Part-time* **5,025**

Full-time* **14,000**

* Domestic students only

2023 data. Source: Ministry of Education. Custom data for Universities New Zealand (extracted 29 April 2024). Numbers have been rounded for confidentiality reasons.

0800 827 748 | canterbury.ac.nz

 [universitycanterbury](https://www.facebook.com/universitycanterbury)

 [ucnz](https://www.instagram.com/ucnz)

 [UniversityCanterbury](https://www.youtube.com/UniversityCanterbury)

 [uc.nz](https://www.snapchat.com/add/ucnz)

 [University of Canterbury](https://www.linkedin.com/company/university-of-canterbury)

 [ucnz](https://twitter.com/ucnz)

 [ucnz](https://www.tiktok.com/@ucnz)

 [新西口坎特伯雷大学](https://www.wechat.com/qrcode/scan?code=UCNZ)

Ākonga Māori

Nau mai, haere mai ki te Whare Wānanga o Waitaha. UC Māori offers support, advice and guidance for all ākonga Māori studying at UC.

Our initiatives focus on supporting ākonga Māori to succeed academically, while encouraging personal growth and connection to the Māori community and culture.

Manaakitanga is important to us. Whether you are thinking about university study or enrolling for the first time, UC Māori can provide you with guidance and support to ensure the study pathway you choose is right for you. We will continue to support you through to the completion of your chosen degree, and offer a range of services and initiatives designed to help you succeed:

- Academic support and guidance.
- Manaaki atu, manaaki mai — pastoral care, support and guidance
- Events and outreach to connect and celebrate ākonga Māori at UC and in the community
- Paihere — our UC Māori Tuākana-Tāina mentoring and leadership programme

Te Akatoki Māori Students' Association also offers many social activities.

WEBSITE KEY WORD SEARCH: Māori, Tuākana Tāina, Punenga

www.canterbury.ac.nz/support/akonga-maori



Pacific students

Tālofa lava, mālō e lelei, kia orana, ni sa bula vinaka, halo olaketa, namaste, kam na mauri, fakaalofa lahi atu, la orana, mahalo, mālō ni, kia ora and warm Pacific greetings.

Pacific support services have been designed to ensure Pacific students get the most out of their studies. The Pacific Development Team (PDT) are part of the Pacific Knowledge & Culture Hub (PAKC) that offers holistic care and support to Pacific students and provides one-to-one peer support to them in their first year of study through a mentoring programme.

Additional support is offered through the PASS (Pacific Academic Solutions and Success) programmes. There are dedicated Pacific spaces onsite such as the Pacific Student Fale, providing a space for study, meetings and tutorials. Pacific events such as Get Fresh, Pasifika Welcome Day, Jandals and Pacific Graduation celebrations all help our students connect and build a healthy sense of belonging as a valued part of the wider university community.

WEBSITE KEY WORD SEARCH: Pacific

www.canterbury.ac.nz/support/get-support/pasifika





LINCOLN
UNIVERSITY
TE WHARE WĀNAKA O AORAKI

Te Whare Wānaka o Aoraki Lincoln University

A place to grow

Main campus: Te Waihora (Lincoln, Christchurch)

Lincoln University is a specialist university focused on the land and its people. Our students are at the heart of all we do, and our campus is celebrated for delivering an exceptional student experience.

At Lincoln we aim to equip you with a strong foundation for lifelong learning, setting you up for career success and empowering you to make a real impact in the land-based sector.

Faculties and division

Agriculture and Life Sciences

Agribusiness and Commerce

Environment, Society and Design

Student population

Total (EFTS) **3,070**

Total (Students) **4,220**

Pre-degree **300**

Undergraduate **1,775**

Postgraduate **2,205**

Domestic **3,370**

International **845**

Māori **235**

Pacific **65**

Part-time* **825**

Full-time* **2,545**

* Domestic students only

2023 data. Source: Ministry of Education. Custom data for Universities New Zealand (extracted 29 April 2024). Numbers have been rounded for confidentiality reasons.

0800 10 60 10 | lincoln.ac.nz



LincolnUniNZ



Lincoln University
New Zealand



LincolnUniversityNZ



LincolnUniNZ



lincolnuninz



@lincolnuninz

Ākongā Māori

Nau mai, tauti mai ki Te Whare Wānaka o Aoraki

Lincoln University is focused on providing excellence in the teaching and delivery options for tauira Māori, Mātauraka and Kaupapa Māori rakahau, research and engagement opportunities with iwi, hapū, whānau and Māori. Our land-based specialisation has a natural synergy with whenua, mahika kai and te taiao and our graduates are often those who provide expert advice, facilitation and development of Māori land assets both in Aotearoa and around the world. Our focus on Mahika kai also allows us to move between the revitalisation of traditional crops and foods to contemporary food innovation and technology.

At Te Whare Wānaka o Aoraki, our programmes have a specificity that allows our tauira and our alumni to show their uniqueness in the marketplace. A key service we offer tauira is connectivity to the Māori economy through internships, joint scholarships and facilitated work placements.

WEBSITE KEY WORD SEARCH: Māori students
www.lincoln.ac.nz/maori-ki-aoraki



Pacific students

Kia orana, Tālofa lava, Mālō e telei, Ni Sa Bula Vinaka,
Fakaalofa lahi atu, Tālofa nī, Fakatalofa atu, Halo oloketa.

Lincoln University has a longstanding association with the Pacific region and its communities, and aims to contribute to the educational and economic aspirations of Pacific people both within New Zealand and in the wider Pacific region.

Pacific students are able to engage in cultural, sporting and social activities on campus supported by the Pasifika Support Coordinator and Te Manutaki – the Māori and Pasifika Team and our Pacific Islands Student Association (LUPISA).

WEBSITE KEY WORD SEARCH: Pasifika students
www.lincoln.ac.nz/student-support/pasifika-ki-aoraki





Te Whare Wānanga o Ōtākou University of Otago

'Otago' for academic excellence and outstanding experience

Main campus: Dunedin

Otago's specific research strengths are in the medical, biomedical, biological and natural sciences, the liberal arts, and law. Otago's outstanding academic reputation, strong research culture and vibrant campus lifestyle attract highly talented students from all over New Zealand and overseas.

Faculties

Health Sciences

Humanities

Sciences

Otago Business School

Student population

Total (EFTS) **18,565**

Total (Students) **21,315**

Pre-degree **350**

Undergraduate **16,445**

Postgraduate **4,785**

Domestic **18,955**

International **2,360**

Māori **2,555**

Pacific **1,395**

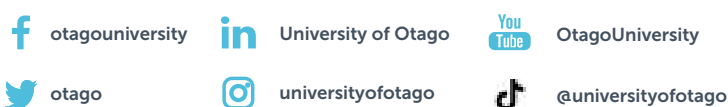
Part-time* **3,370**

Full-time* **15,585**

* Domestic students only

2023 data. Source: Ministry of Education. Custom data for Universities New Zealand (extracted 29 April 2024). Numbers have been rounded for confidentiality reasons.

0800 80 80 98 | otago.ac.nz



Ākonga Māori

Nau mai, haere mai, ki Te Whare Wānanga o Ōtākou.

Otago tauira Māori and their whānau have access to a wide range of support services, as well as scholarships and a dedicated School of Māori, Pacific and Indigenous Studies, Te Tumu.

The Māori Centre—Te Huka Mātauraka offers a home away from home for tauira Māori, from pre-enrolment, Turāka Hou—Māori Orientation—through to pre-graduation celebrations, graduation and beyond.

Te Rōpū Māori o Te Whare Wānanga o Otago is the Māori Students' Association.

WEBSITE KEY WORD SEARCH: Māori, Māori Centre
www.otago.ac.nz/maoricentre

Pacific students

Kia Orana, Tālofa Lava, Kia Ora, Mālō e lelei, Ni sa bula Vinaka, Fakaalofa Lahi Atu, Tālofa nī, Fakatalofa atu, Halo olaketa, Mauri.

The Pacific Island Centre—Te Pokapū mā kā ākoka o kā Mouutere o Te Moana Nui a Kiwa supports Pacific students, their families and communities at Otago University.

The centre offers academic mentoring through the Taimane programme and can offer tutorial sessions. Supervised study nights are also held.

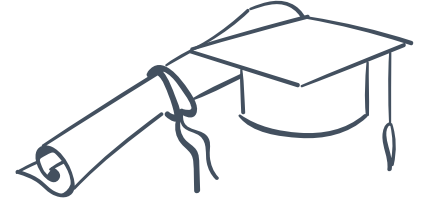
WEBSITE KEY WORD SEARCH: Pacific, Pacific Students
www.otago.ac.nz/pacific-at-otago



Semester

Week Starting	Waipapa Taumata Rau, University of Auckland	Auckland University of Technology (AUT)	The University of Waikato	Massey University	Te Herenga Waka - Victoria University of Wellington	University of Canterbury	Lincoln University	University of Otago
1 30.12.24				Summer school from 3 Jan				
2 06.01.25	Summer school from 6 Jan	Summer school from 6 Jan	Summer school from 6 Jan		Trimester 3 continues	Summer school from 6 Jan	Summer school from Jan 6	Summer school from 6 Jan
3 13.01.25								
4 20.01.25								
5 27.01.25								
6 03.02.25								
7 10.02.25			Examinations 10 - 14 Feb	Examinations 10-14 Feb				Examinations
8 17.02.25	Examinations 17-19 Feb		Enrolment completion		Enrolment completion	Semester One begins	Semester One begins	15-20 Feb
9 24.02.25			Trimester A begins	Semester One begins	Trimester One begins			Semester One begins
10 03.03.25	Semester One begins	Semester One begins						
11 10.03.25								
12 17.03.25								
13 24.03.25								
14 07.04.25						Mid-semester break (Easter)	Mid-semester break (Easter)	
15 14.04.25	Mid-semester break (Easter)	Mid-semester break (Easter)	Mid-trimester break (Easter)	Mid-semester break (Easter)	Mid-trimester break (Easter)	07-25 April	07-25 April	Mid-semester
16 21.04.25	14-25 April	14-25 April	14-25 April	14-25 April	14-25 April			break (Easter) 18-25 April
17 28.04.25								
18 05.05.25								
19 12.05.25								
20 19.05.25								
21 26.05.25								
22 02.06.25		Study break and	Study break 02-06 June	Study break 03-06 June	Study break 02-05 June	Study break 2-8 June	Study break 2-8 June	Examinations 04-18 June
23 09.06.25	Study break 9-11 June	examinations 03-19 June	Examinations 09-19 June	Examinations 09-20 June	Examinations 06-21 June	Examinations 09-21 June	Examinations 09-21 June	
24 16.06.25	Examinations 12-30 June							
25 23.06.25			Mid-year break 23 - 29 June	Mid-year break	Mid-year break	Mid-year break	Mid-year break	Mid-year break
26 30.06.25	Inter-semester break 01-18 July	Mid-year break 30 June-18 July	Enrolment 30 June-06 July	23 June - 11 July	23 June - 04 July	22 June - 11 July	22 June - 13 July	19 June - 11 July

Ngā Tohu Qualifications



University preparation programmes (New Zealand Qualifications Framework Levels 4/5)

All universities have foundation pathways for students who need further English language, academic and study skills preparation before undertaking undergraduate study. Foundation programmes generally run for up to one year of full-time study.

Bachelor's degree (NZQF Level 7)

Normally takes three years (full-time) and consists of a prescribed number of papers or courses. Typically, a bachelor's degree offers a great deal of flexibility and the opportunity for students to choose a programme appropriate for them.

Bachelor's degree with honours (NZQF Level 8)

An integrated four-year programme requiring more specialised study in the chosen major subject and frequently involving some independent research or investigation. You can also later choose to do a one-year programme of honours study following a standard bachelor's degree.

Graduate diploma / graduate certificate (NZQF Level 7)

A graduate diploma is a one-year (full-time) course of study for graduates. Prior learning or experience in the subject matter of the diploma is not always required, giving graduates an opportunity to add a qualification in a different major subject to that of their first degree. A graduate diploma may also be used as a bridging qualification to specialist postgraduate study.

A graduate certificate is a half-year (full-time) course of study.

Postgraduate diploma / postgraduate certificate (NZQF Level 8)

A postgraduate diploma is a one-year (full-time) course of study that builds on the same subject matter in the academic field of a relevant bachelor's degree.

A postgraduate certificate is a half-year (full-time) course of study.

NZQF LEVEL QUALIFICATION TYPE

1–6	Certificates
5–6	Diplomas
7	Bachelor's degrees Graduate diplomas and certificates
8	Postgraduate diplomas and certificates Bachelor's degrees with honours
9	Master's degrees
10	Doctorates

Masters' degree (NZQF Level 9)

Open to those who have completed a bachelor's degree with good grades and comprises one to two years of advanced study in the student's major discipline.

Doctorate (NZQF Level 10)

Normally the highest academic qualification available within a university. The main doctorate is the PhD (Doctor of Philosophy). This degree can be taken in any one of the wide range of subjects and involves original and sustained research under academic supervision. A PhD usually takes at least three years of full-time study.

Conjoint degrees

A specialised programme of study that enables a student to complete two bachelor's degrees in a shortened time.



Me whakarite koe Get ready

Deciding to go to university may seem a little overwhelming for you (and your whānau!) so we have put together a timeline and prepared some information you may find useful to help get your studies off to a great start.



Me whakarite koe

Get ready

Deciding to go to university may seem a little daunting for you (and your whānau!) so we have put together a timeline full of info so you can get your studies off to a great start!

Mei
MAY

Get planning

Key contact:
University Admissions Office

- Make sure you're on track to get University Entrance (UE). If you're unsure, talk to your school.
- Not doing NCEA? Check out our website (www.thinkingaboutuni.nz) for other pathways into university.
- Check the universities' application deadlines (some programmes have earlier closing dates than others).

Hune
JUN

Get advice

Key contacts:
Future Student Advisers & Finance Advisers

Study related:
Course advisers can help you plan your study year.

Contact the university if you'd like help to:

- Choose your course.
- Choose your qualification.
- Complete your Application to Enrol.
- Plan your timetable.

- Money matters:**
- Jobs, scholarships, budgeting, living expenses—get advice on money matters.
 - See what support your Student Union offers.
 - Budget guides are available at each university.

Hūrae
JUL

Get applying

Key contact:
University Admissions Office

- Check (and double-check) the entry requirements for the courses you're applying for. Some courses have specific requirements in addition to UE.
- See the 'Get in' section of our website for more details on what you'll need when applying.

Ākuhata
AUG

Get a room

Key contacts:
Accommodation & Halls of Residence

- Tour the facilities.
- Check application deadlines.
- See info on Halls of Residence on our website (www.thinkingaboutuni.nz)

Get connected

Key contacts:
Future Student Advisers

- Attend a university visit at your school.
- Go to a university Open Day.
- Check out a university prospectus.
- Universities have lots of supporting guides as well:
 - information for parents
 - accommodation guides
 - Māori student guides
 - Pacific student guides
 - budgeting & financial planning guides.

Get a scholarship

Key contact:
University Scholarships Office

Universities and other organisations offer a wide range of scholarships for university study.

There are scholarships to support:

- Academic achievement.
- Māori students, Pacific students, students with disabilities, and financial hardship.
- Sport and cultural achievement.
- Specific subjects.

If you're of Māori descent, make sure you check to see if your iwi offers education scholarships.

See the information on scholarships on our website (www.thinkingaboutuni.nz) and also:

- **Generosity** www.generosity.org.nz/
- **Māori Education Trust** www.maorieducation.org.nz/index.php/scholarships
- **Universities New Zealand undergraduate scholarships** www.universitiesnz.ac.nz/scholarships

Lots of scholarships are available. Whānau should really encourage their rangatahi to apply.



Noema
NOV

Get funded

Key contacts:
StudyLink & Fees Free websites

Try to apply by **16 December** to help get your correct payments on time, even if you haven't finalised where or what you're studying.

See the StudyLink info on our website and the StudyLink website: www.studylink.govt.nz



Fees Free 2025

The Government has advised they intend to change the Fees Free policy from 2025. The details of the change are yet to be confirmed. www.feesfree.govt.nz



Tihema
DEC

Get accepted

Key contact:
University Admissions Office

- **Conditional offer of place**
Universities may make you a conditional offer before your school results are released.
- **Formal offer of place**
Universities will send a formal offer once school results are released.
- **Accepting or declining an offer of place**
The university will send you information about accepting or declining an offer of place.

Hānuere
JAN

Get under way

Key contacts:
University Student Association

- **Orientation Week (O Week)** is where you'll meet new people and be introduced to the campus, its support teams and services. There are lots of fun things like concerts and club events.
- **Clubs Day** is where you'll find out about the clubs on campus. Sign up to a wide range of sport teams and academic, cultural or social groups.
- **Māori and Pacific** students may be invited to attend a Pōwhiri or another formal welcoming. Your whānau can come too!

Get a Job

Key contacts:
Student Job Search & NZUni Talent

- If you're going to need a job to help with costs at university, check out Student Job Search.
- Also look at NZUni Talent, an online tool to find work.

Student Job Search www.sjs.co.nz
NZUni Talent www.nzunitalent.ac.nz

Pēpuere
FEB

Get it sorted

Key contact:
University Admissions Office

Changing your enrolment

- You can drop, swap or add a course for a limited time at the start of each semester.
- Check the change of enrolment deadlines or you'll be charged for the courses you want to drop.

You can apply to as many NZ universities as you want! This means you'll have more time to decide which university is right for you.

Many scholarships for school leavers are based on Year 12 results.



Te whakauru mai



Get in:

University Admission



How do you get into university?

A range of pathways are available. Check the next four pages for UE through NCEA, and other school-leaver qualifications, and other admission pathways.

If you need further support, contact a university.



University Entrance through NCEA

University Entrance (UE) is the minimum standard for entrance to a New Zealand university.

To qualify you'll need:

NCEA Level 3

Three subjects at NCEA Level 3, made up of:

- 14 credits each in three approved subjects.

Literacy – 10 credits at Level 2 or above, made up of:

- 5 credits in reading.
- 5 credits in writing.

Numeracy – 10 credits at Level 1 or above, made up of:

- Co-requisite Level 1 numeracy unit standard (US 32406) or Te Pāngarau unit standard (US 32412) or,
- Certain achievement standards.

Check out our 'Other admission pathways' page (p32) if you've missed out on UE.

For more information on UE, go to NZQA's website:
www.nzqa.govt.nz/ncea

Te Marautanga o Aotearoa

The University Entrance standard includes approved subjects and achievement standards from Te Marautanga o Aotearoa. Visit NZQA's website for more information:
www.bit.ly/3xE1PKE

An NCEA Level 3 certificate

14 credits at Level 3 in an approved subject

14 credits at Level 3 in an approved subject

14 credits at Level 3 in an approved subject

Literacy

10* credits at Level 2 or above (5 in reading, 5 in writing)

Numeracy

10* credits at Level 1 or above

* From specified list of standards. See www.nzqa.govt.nz/ncea



Other school-leaver qualifications

Universities also accept other school-leaver qualifications for admission to an undergraduate degree.

Cambridge Assessment International Examinations (CAIE)

To be eligible for admission, candidates must achieve the following:

Part A

- A minimum of 120 points on the New Zealand CAIE Tariff (refer table) at A or AS Level from any

syllabus groups broadly equivalent to those in the list of approved subjects for NCEA

AND

- A D grade or better in syllabuses from at least three different syllabus groups (excluding Thinking Skills).

Part B

Literacy and numeracy must be satisfied as follows:

Literacy

EITHER

An E grade or better in any one of AS English Language, English Language and Literature, English Literature or English General Paper. A D grade or better will satisfy one of the syllabus requirements of Part A.

OR

As prescribed for University Entrance with NCEA.

Numeracy

EITHER

A D grade or better in IGCSE or GCSE mathematics

OR

Any mathematics passed at AS Level. A 'D' grade or better will satisfy one of the syllabus requirements of Part A

OR

As prescribed for University Entrance with NCEA.

NZ CAIE Tariff		
Grade	A Level	AS Level
A*	140	n/a
A	120	60
B	100	50
C	80	40
D	60	30
E	40	20

International Baccalaureate (IB)

Completion of the Diploma (minimum of 24 points).

An IB Diploma completed with English as Language A1 at either Higher or Standard Level and including any mathematics subject satisfies the literacy and numeracy requirements for University Entrance.

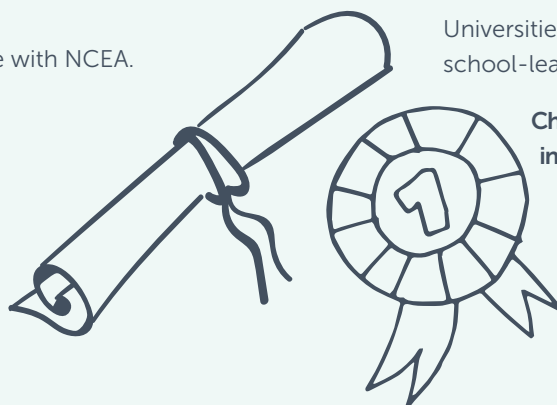
New Zealand Certificate in Steiner Education (Level 3)

A completed Steiner School Certificate Level 3, including 9 points in each of 3 approved subject areas, 8 points in literacy (4 writing/4 reading) and 9 points in numeracy.

Overseas school-leaver qualifications

Universities accept a wide range of overseas school-leaver qualifications for admission.

Check university websites for up-to-date information.





Additional entry requirements

- Some courses of study require you to have taken specific NCEA-approved subjects and gained a minimum number of credits.
- Some courses of study require you to have taken specific achievement standards in certain NCEA-approved subjects.
- Some courses of study also have other entry requirements such as a portfolio, audition and/or interview.

Selective entry

- Selective entry might apply to some courses of study, especially for those with limited or competitive entry.

Guaranteed or preferential entry scores

- Some universities use a rank score system for guaranteed or preferential entry into some courses of study, especially for those with limited or competitive entry. The score is based on the number of Level 3 credits you gain with Excellence, Merit or Achieved.
- You may still be accepted into a course of study if you don't meet the rank score but meet the University Entrance standard. Check with the university for specific details.
- Get the right advice: Check with the university to see if the rank score applies to you and how to calculate your score for that university.

Targeted entry pathways

Some universities have special entry pathways for specific student groups—e.g. Māori, Pacific and students with disabilities.

OTHER ADMISSION PATHWAYS

University preparation courses

Universities and other providers offer university preparation courses for students without University Entrance or an equivalent qualification.

Check with the university to see which courses it accepts as a suitable entry qualification.

If you didn't get University Entrance this may be an option for you! Contact the university to find out more.

University Academic Calendars

A university's Academic Calendar contains a record of all the university's regulations, policies and course information for the academic year.

Even if you've started your study, you can move to another institution!

Discretionary Entrance

If you're a New Zealand or Australian citizen (or permanent resident) who hasn't continued secondary education beyond Year 12, you can apply for Discretionary Entrance based on your Year 12 results.

You'll need to have met certain requirements in your Year 12 results, including a reference from your school principal (or another suitable person), and you may need to do an interview. Discretionary Entrance is only for admission into a specific course of study, not general admission into a university.

Check university websites for more information.

Special Admission for students over 20 (without UE)

If you're over 20 years old and a New Zealand or Australian citizen (or permanent resident) who doesn't have a University Entrance qualification, you can apply for Special Admission.

Check university websites for Special Admission application deadlines and what you'll need to provide with your application.

Transferring students

If you're transferring from one degree to another, you can apply to have the courses you've already completed credited to your new degree.

Me whakarite koe

Hoto Akoranga

Karahipi

Wharepuni

Get sorted

StudyLink

Scholarships

Accommodation

You'll see in our timeline (p28–29) some key things to think about. This section looks at a few of these in more detail.



Hoto Akoranga StudyLink

Parents

StudyLink can only give you information about *your* part of your child's application (e.g. your income evidence) unless they have appointed you as their agent.

It's important you work out how you're going to fund your study and living costs. Here's an idea about what you'll need to apply to StudyLink.

For all the details on the financial support available from StudyLink, go to studylink.govt.nz/starting-study

Student Loans—Help you to pay for your course fees (the compulsory fees charged by your education provider), study materials (e.g. books, computer) and living costs.

Just remember it's a loan. You'll have to pay this back.

Student allowance—This is a weekly payment that can help with your living expenses while you're studying if you're eligible. You don't have to pay the money back BUT there are conditions.

You can apply for student loans and allowances online. Make sure you have:

- RealME account to apply online and access your My StudyLink.
- RealME verified identity.

The documents you'll need to provide for a RealME account include evidence of:

- Who you are (birth certificate or passport).
- Name change if you've changed your name.
- Your bank account number (verified).
- Your IRD number.

If you're under 18, you'll need to supply some additional information.

The StudyLink eligibility test is part of the application process. This tells you what you may be eligible for. You'll need to provide the following information:

- Course details (including start and end dates and study break period).
- Citizenship/residency details.
- Income information, if applicable.
- Parents' income information if you're under 24. If you have a child or you're over 24 and have a partner, you'll need to provide additional information. See the StudyLink website for more information.
- IRD number and tax code.

Parents: StudyLink can only give you information about *your* part of your child's application (e.g. your income evidence) unless they have appointed you as their agent.

www.studylink.govt.nz/starting-study/thinking-about-study/information-for-parents.html



www.studylink.govt.nz
0800 88 99 00



www.realme.govt.nz
0800 664 774



www.ird.govt.nz
0800 775 247



Lots of scholarships are available. Whānau should really encourage their rangatahi to apply.

Karahipi Scholarships

Scholarships are a smart way to fund your study. Depending on the scholarship, you might need to provide the following supporting documents with your application:

- Personal statement: academic achievements, leadership, sporting, cultural and community achievements and involvement.
- Statement about your study plans and ambitions.
- List of accomplishments, awards and leadership positions.
- Academic results (e.g. NCEA record of achievement).
- References—different scholarships might require different types of references:
 - **Academic reference** —supports your academic achievements and ambitions.
 - **Character reference:**
 - supports your personal qualities and non-academic achievements (e.g. leadership, sporting and cultural activities)
 - identify strong referees for each type of reference
 - confirm referees are willing to be contacted for a written reference (these are usually confidential and submitted directly to the scholarship administrators)
 - provide your referee with information about the scholarships you're applying for and the closing dates.

You should apply for every scholarship you're eligible for and if you're considering more than one university apply for scholarships at each of them.

If you're of Māori descent, make sure you check to see if your iwi offers education scholarships.

Lots of scholarships are available. Whānau should really encourage their rangatahi to apply.

Wharepuni Halls of Residence



Halls of Residence (also known as residential colleges) are typically for full-time first-year students. They provide a welcoming community to help you settle into university life.

You'll pay rent for your room and in most cases this will cover, food, power and internet costs. Halls are a great place to get academic support and get involved in social events.

Applications often open around August–September so you'll need to ensure you have all the documentation ready to apply. Places are limited.

In most cases, you'll also need to pay a 'bond' or 'deposit' if you accept an offer.

A deposit will often cover things like the bond, administration fees and activities fees. A bond is an advance payment Halls of Residence ask students to pay as security to cover any unpaid rent or damage to the property.

Halls of Residence applications are interested in an applicant's academic achievements and personal qualities and attributes.

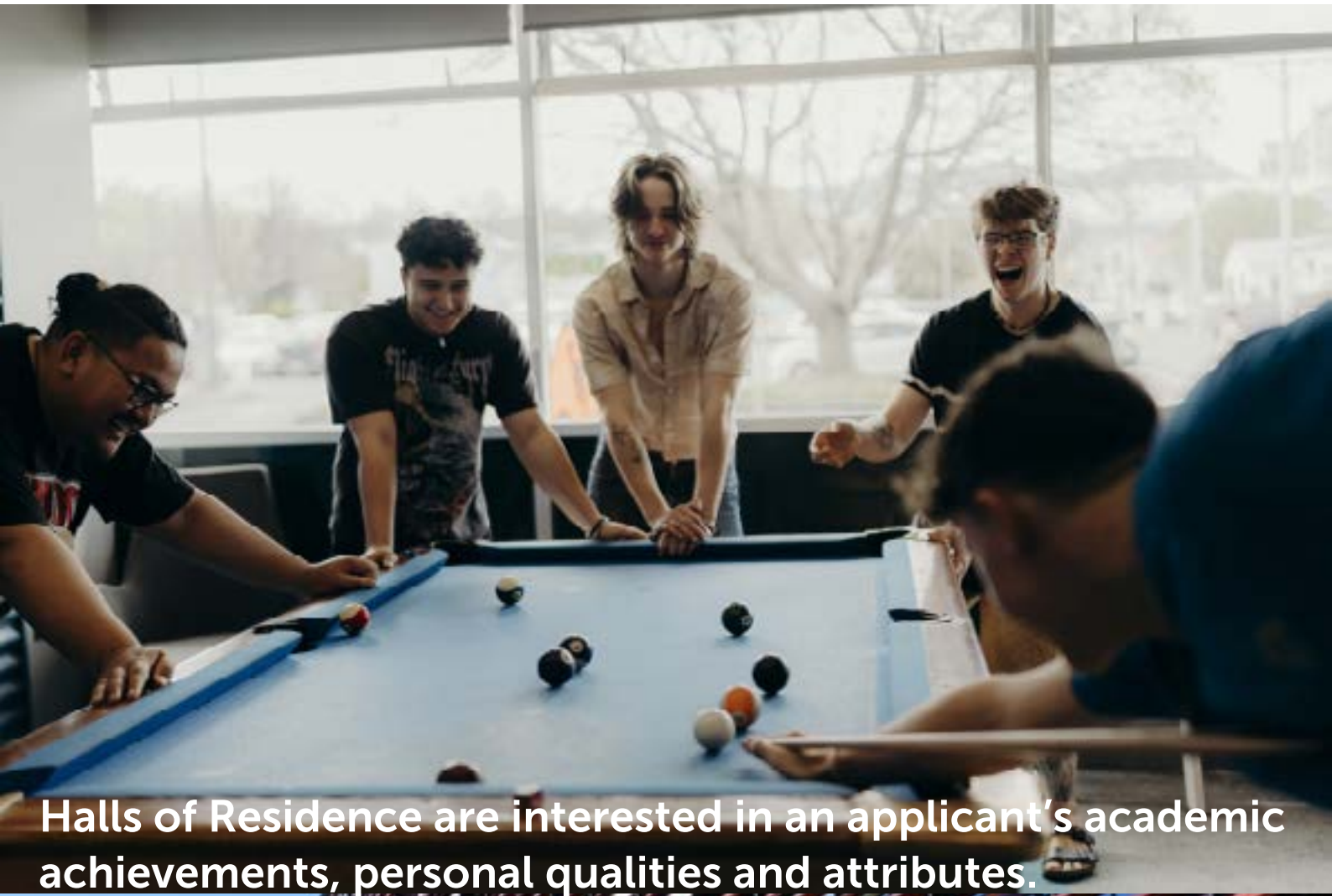
You may need to provide statements and information about the following as part of your Halls of Residence application:

- Leadership, sporting, cultural and community achievements and involvement.
- Your study plans and ambitions.
- Academic results (e.g. NCEA record of achievement).
- A reference from your secondary school.
- Photo—head shot.

Scholarships are sometimes available to help with Halls of Residence costs. Check out the universities' scholarship pages.

Accommodation

You may choose to flat rather than move into a Hall. The universities have Accommodation Offices that can help find a suitable property to rent. They can also provide information on costs, lease agreements and finding flatmates.



Halls of Residence are interested in an applicant's academic achievements, personal qualities and attributes.



A deposit will often cover things like the bond, administration fees and activities fees. A bond is an advance payment Halls of Residence ask students to pay as security to cover any unpaid rent or damage to the property.

Me whakawhānui te wheako Get more experience

Universities offer a range of opportunities that will help you connect and explore life as a student. When you're thinking about which university to attend, also look at the additional experiences on offer.



Akoranga kei tāwāhi

Study abroad and student exchange

Experience and explore

Study abroad and student exchange programmes are an opportunity to explore and experience overseas study as part of your NZ degree.

- Earn credits towards your NZ degree.
- Graduate with international experience.
- Pay NZ tuition fees and if you're eligible continue to receive StudyLink loans or allowances (see StudyLink's website for more information: www.studylink.govt.nz).

Karahipi Rangahau o te Raumati

Summer research scholarships

Explore the world of academic research

- Gain valuable research experience.
- Work with leading researchers.
- Prepare for the possibility of postgraduate study.
- Develop your research skills.
- Enhance your career opportunities.

Tūranga tauira

Internships and work placements

Connect

Internships and work placements are an opportunity to connect with industry, all as part of your study experience.

- Apply your learning to 'real-world' situations.
- Build your work history.
- Develop valuable transferable skills.

Further Information

To find out more about these opportunities use these 'keywords' to search the university website for more details.

Study Abroad | Exchange |
Work Placements | Internships |
Summer Research



Te noho hei ākongā

Student life:

a typical day

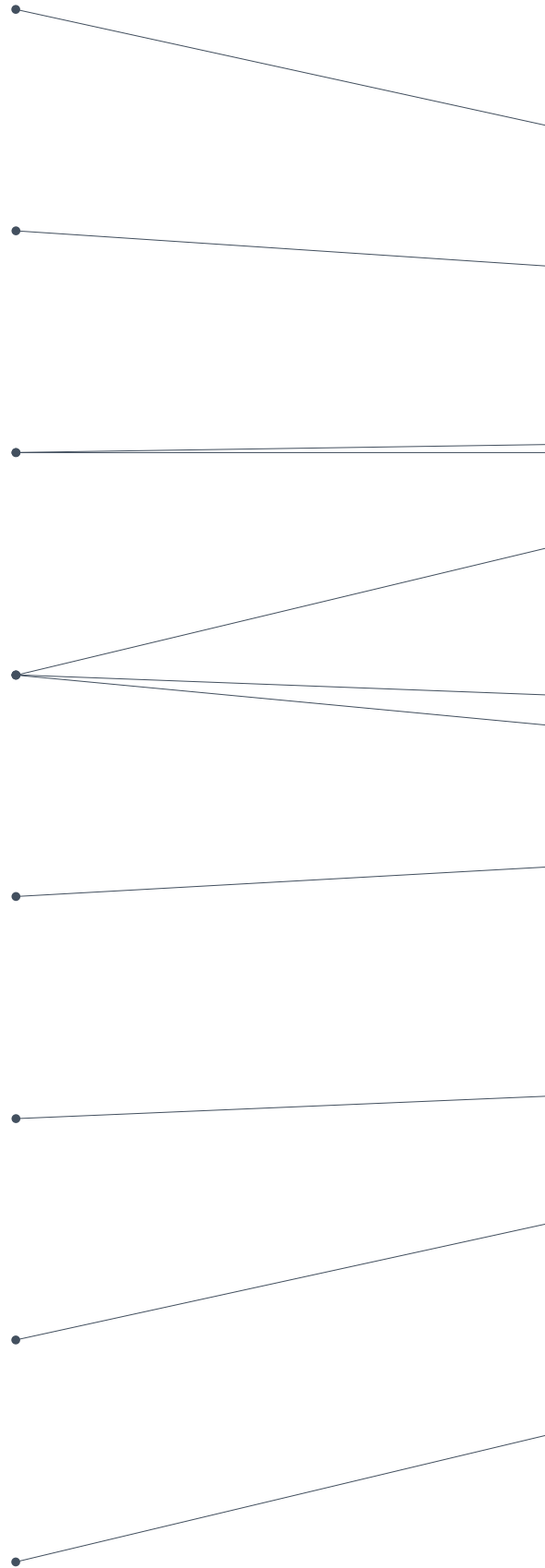
To give you an idea of student life, we've put together what a typical day could look like.

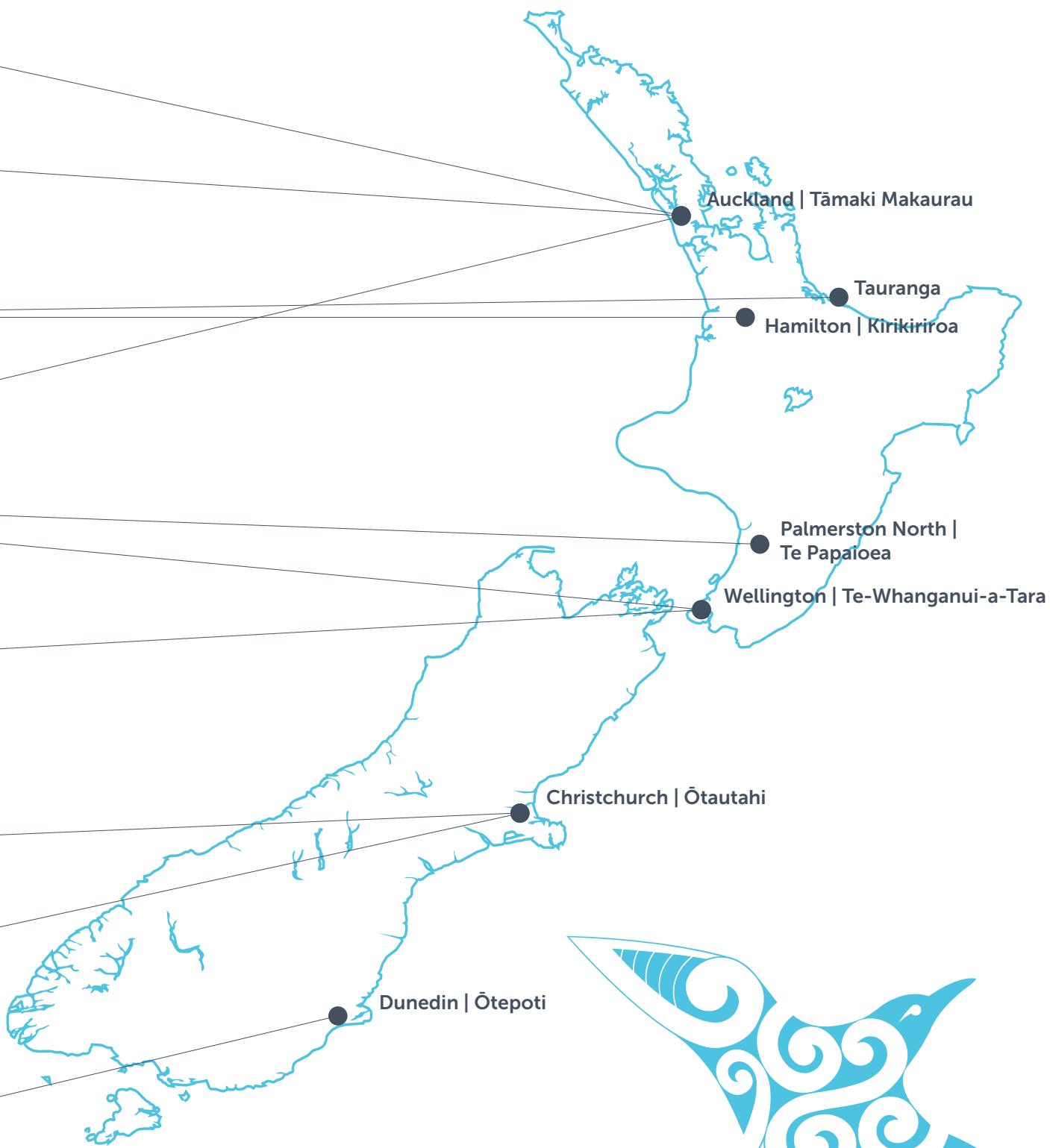


LET'S SAY YOU'RE A FIRST-YEAR BACHELOR OF EDUCATION (TEACHING) STUDENT LIVING IN A HALLS OF RESIDENCE CLOSE TO CAMPUS!

8AM:	WAKE UP, GET READY AND GO TO BREAKFAST IN THE DINING HALL
8.45AM:	WALK TO CAMPUS, CATCH UP WITH FRIENDS
9AM:	LECTURE 1
10AM:	HEAD OFF TO YOUR TUTORIAL CLASS STARTING AT 10AM
11AM:	TUTORIAL DONE, TIME TO HEAD TO THE GYM
12PM:	GO BACK TO THE HALL, SHOWER AND GRAB SOME LUNCH
12.45PM:	LECTURE 2 - GUEST LECTURE
2.45PM	GRAB A COFFEE AND HEAD TO THE STUDENT HUB TO STUDY
4.30PM:	RETURN TO HALL, MEET UP WITH FRIENDS. CHILL BEFORE DINNER
6PM:	DINNER IN THE DINING HALL
7PM:	HEAD TO THE REC ROOM FOR THE HALLS MOVIE NIGHT

**To do: register on Student Job Search website and find a job (www.sjs.co.nz)*





Auckland | Tāmaki Makaurau

Tauranga

Hamilton | Kirikiriroa

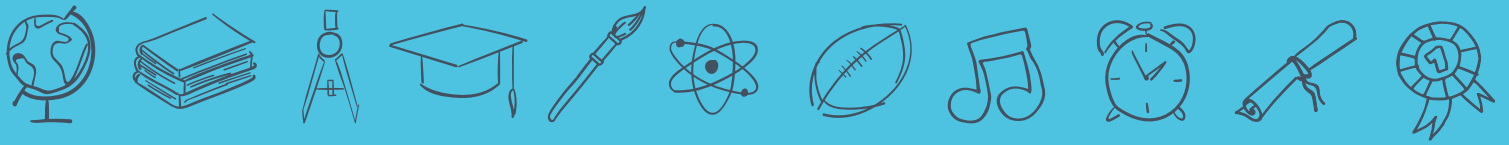
Palmerston North |
Te Papaioea

Wellington | Te-Whanganui-a-Tara

Christchurch | Ōtautahi

Dunedin | Ōtepoti





Te Pōkai Tara
Universities
New Zealand

Universities NZ – Te Pōkai Tara
Level 3, 69 The Terrace, Wellington
PO Box 860, Wellington 6140, New Zealand
Telephone: +64 (04) 381 8500

thinkingaboutuni.nz
universitiesnz.ac.nz

